

2" Poly Ball Valve Camlock End With Integrated Backside Check Valve For Use With IBCs

(Patent Pending)

Description

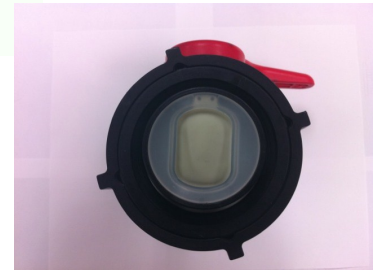
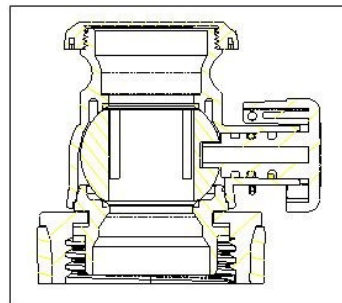
IBC North America continues to bring innovation to the marketplace with its new 2" poly ball valve with camlock end and integrated backside check valve (patent pending). This valve is completely free of metal or mechanized parts for corrosion resistance and complies with 2010/11 EPA regulations for Pesticides used in IBCs.



**Complies with
2010/11 EPA
regulations for
Pesticides used
in IBCs**

Features

- Check valve is oversized to allow for limited flow obstruction, IBC drains in 15 minutes
- Tested at high pressure for backflow prevention
- Free of metal or mechanized parts
- Complies with 2010/11 EPA regulations for Pesticides used in IBCs
- Economical design provides compliance at an attractive price
- Available on new, remanufactured and washed out composite IBCs from IBC North America



IBC North America
4545 Clawson Tank Drive
Clarkston, MI 48346

Customer Service Telephone
251.947.2350

Materials of Construction

Valve Body - Polypropylene
Check Flap - Santoprene
Collar Gasket - Santoprene
Stem O-ring - Santoprene